

TurfMuncher TM2000D

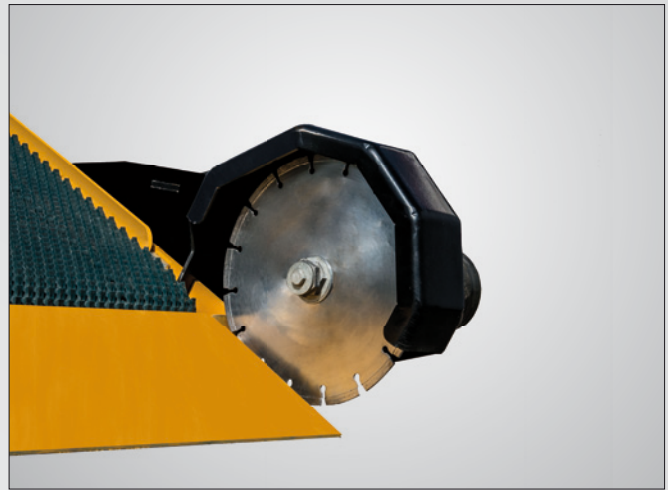


Machine for the removal of artificial turf and extracting of the infill

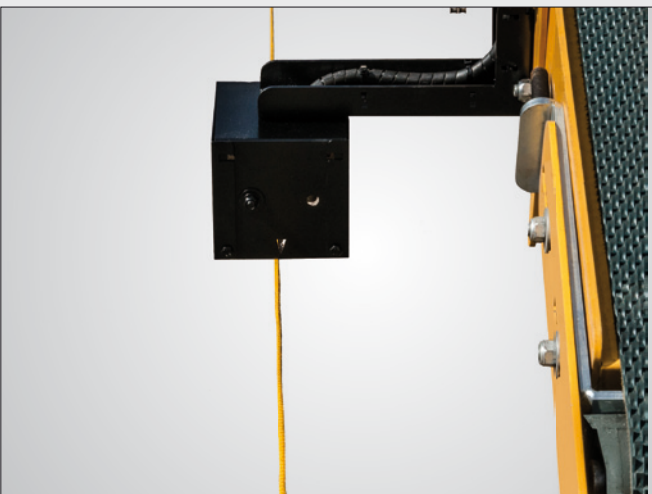
Self-propelled machine for the removal of artificial turf and separating of the infill; water-cooled 4 cylinder Kubota diesel engine with 44 HP; all functions electro-hydraulically controlled; device to separate the infill from the artificial turf; conveyor discharge height 2.400 mm; conveyor 180° traversable; cutting device for the precise cutting of the turf; optional sensor-unit for a straight run. Winder for rolls up to 2.000 mm and a diameter of 900 mm = 35 meters.



Conveyer 180° traversable



optional cutting device



optional sensor device



compact dimensions

Chassis	Tubular steel, enamel coated
Drive	4 cylinder; 44 hp Kubota Diesel engine
Control	Electro-hydraulic
Tires	8 pcs. (20x10.00-8)
Working width	2000 mm
Maximum removal rate	7 m/min; 500 kg/min; 4,000 m ² /day of rolled turf
Machine weight empty	3,300 kg
Dimensions	L 2,800 x W 2,250 x H 2,100 mm
Subject to technical alterations	



Sportplatzmaschinenbau GmbH
 Robert-Bosch-Straße 3
 D-89269 Vöhringen (Germany)
 Fon +49(0)7306 - 96650
 Fax +49(0)7306 - 966550
 info@smg-gmbh.de
 www.smg-gmbh.de